

Viola 1

Milonga de Chimacum

Bree Dwyer

♩ = 114

Measures 1-4 of the Viola 1 part. The key signature has one sharp (F#) and the time signature is 3/4. The first measure contains a triplet of eighth notes (F#, G, A) followed by a quarter note (B). The second measure contains a quarter note (F#), an eighth rest, and a quarter note (B). The third measure contains a quarter note (F#), an eighth rest, and a quarter note (B). The fourth measure contains a quarter note (F#), an eighth rest, and a quarter note (B). The first measure is marked *f* and the second measure is marked *ff*. A double bar line is present after the second measure.

Measures 5-8 of the Viola 1 part. The key signature has one sharp (F#) and the time signature is 3/4. The first measure contains a quarter note (F#), an eighth rest, and a quarter note (B). The second measure contains a quarter note (F#), an eighth rest, and a quarter note (B). The third measure contains a quarter note (F#), an eighth rest, and a quarter note (B). The fourth measure contains a quarter note (F#), an eighth rest, and a quarter note (B). The first measure is marked *mf*. A box labeled **A** is placed above the first measure, and the word *pizz.* is written above the first measure.

Measures 9-10 of the Viola 1 part. The key signature has one sharp (F#) and the time signature is 3/4. The first measure contains a quarter note (F#), an eighth rest, and a quarter note (B). The second measure contains a quarter note (F#), an eighth rest, and a quarter note (B). The first measure is marked *mf*. A box labeled **B** is placed above the first measure.

Measures 11-17 of the Viola 1 part. The key signature has one sharp (F#) and the time signature is 3/4. The first measure contains a quarter note (F#), an eighth rest, and a quarter note (B). The second measure contains a quarter note (F#), an eighth rest, and a quarter note (B). The third measure contains a quarter note (F#), an eighth rest, and a quarter note (B). The fourth measure contains a quarter note (F#), an eighth rest, and a quarter note (B). The fifth measure contains a quarter note (F#), an eighth rest, and a quarter note (B). The sixth measure contains a quarter note (F#), an eighth rest, and a quarter note (B). The seventh measure contains a quarter note (F#), an eighth rest, and a quarter note (B).

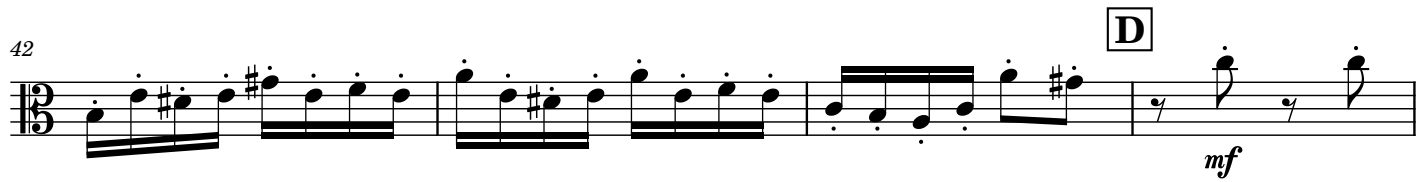
Measures 18-23 of the Viola 1 part. The key signature has one sharp (F#) and the time signature is 3/4. The first measure contains a quarter note (F#), an eighth rest, and a quarter note (B). The second measure contains a quarter note (F#), an eighth rest, and a quarter note (B). The third measure contains a quarter note (F#), an eighth rest, and a quarter note (B). The fourth measure contains a quarter note (F#), an eighth rest, and a quarter note (B). The fifth measure contains a quarter note (F#), an eighth rest, and a quarter note (B). The sixth measure contains a quarter note (F#), an eighth rest, and a quarter note (B).

Measures 24-32 of the Viola 1 part. The key signature has one sharp (F#) and the time signature is 3/4. The first measure contains a quarter note (F#), an eighth rest, and a quarter note (B). The second measure contains a quarter note (F#), an eighth rest, and a quarter note (B). The third measure contains a quarter note (F#), an eighth rest, and a quarter note (B). The fourth measure contains a quarter note (F#), an eighth rest, and a quarter note (B). The fifth measure contains a quarter note (F#), an eighth rest, and a quarter note (B). The sixth measure contains a quarter note (F#), an eighth rest, and a quarter note (B). The first measure is marked *f*. A box labeled **C** is placed above the first measure, and the word *arco* is written above the first measure.

Measures 33-36 of the Viola 1 part. The key signature has one sharp (F#) and the time signature is 3/4. The first measure contains a quarter note (F#), an eighth rest, and a quarter note (B). The second measure contains a quarter note (F#), an eighth rest, and a quarter note (B). The third measure contains a quarter note (F#), an eighth rest, and a quarter note (B). The fourth measure contains a quarter note (F#), an eighth rest, and a quarter note (B). The fifth measure contains a quarter note (F#), an eighth rest, and a quarter note (B). The sixth measure contains a quarter note (F#), an eighth rest, and a quarter note (B).



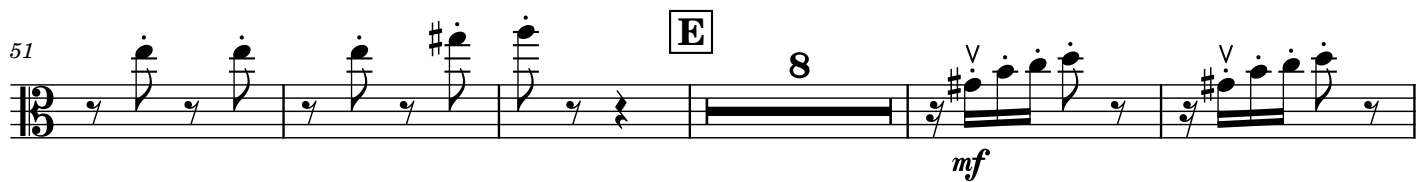
42



46



51



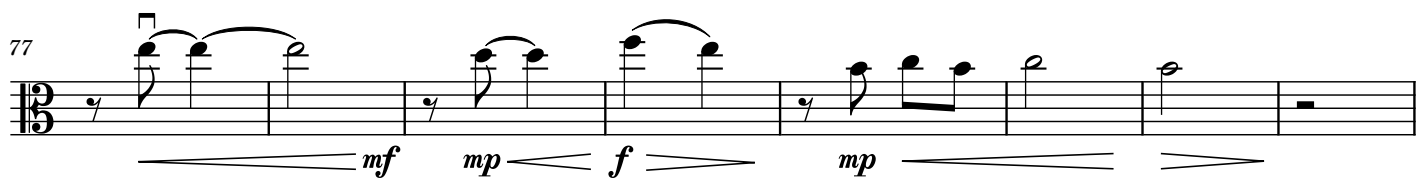
64



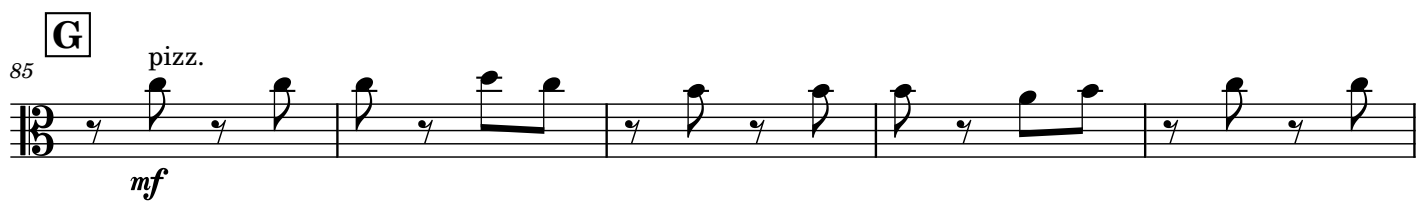
69



77



85



90

H arco

f *mf*

Staff 90-95: Treble clef, 12/8 time signature. Measures 90-95. Measure 90: quarter rest, eighth notes G4, A4, B4. Measure 91: quarter rest, eighth notes G4, A4, B4. Measure 92: quarter rest, eighth notes G4, A4, B4. Measure 93: quarter rest, eighth notes G4, A4, B4. Measure 94: quarter rest, eighth notes G4, A4, B4. Measure 95: quarter rest, eighth notes G4, A4, B4. Dynamics: *f* at measure 93, *mf* at measure 95. Markings: **H** in a box above measure 94, 'arco' above measure 95. Accents (V) above measures 94 and 95.

96

Staff 96-99: Treble clef, 12/8 time signature. Measures 96-99. Measure 96: quarter rest, eighth notes G4, A4, B4. Measure 97: quarter rest, eighth notes G4, A4, B4. Measure 98: quarter rest, eighth notes G4, A4, B4. Measure 99: quarter rest, eighth notes G4, A4, B4.

100

f *mf*

Staff 100-104: Treble clef, 12/8 time signature. Measures 100-104. Measure 100: quarter rest, eighth notes G4, A4, B4. Measure 101: quarter rest, eighth notes G4, A4, B4. Measure 102: quarter rest, eighth notes G4, A4, B4. Measure 103: quarter rest, eighth notes G4, A4, B4. Measure 104: quarter rest, eighth notes G4, A4, B4. Dynamics: *f* at measure 102, *mf* at measure 104. Markings: 'arco' above measure 102, 'V' above measure 103.

105

I 7

Staff 105-116: Treble clef, 12/8 time signature. Measures 105-116. Measure 105: quarter rest, eighth notes G4, A4, B4. Measure 106: quarter rest, eighth notes G4, A4, B4. Measure 107: quarter rest, eighth notes G4, A4, B4. Measure 108: quarter rest, eighth notes G4, A4, B4. Measure 109: quarter rest, eighth notes G4, A4, B4. Measure 110: quarter rest, eighth notes G4, A4, B4. Measure 111: quarter rest, eighth notes G4, A4, B4. Measure 112: quarter rest, eighth notes G4, A4, B4. Measure 113: quarter rest, eighth notes G4, A4, B4. Measure 114: quarter rest, eighth notes G4, A4, B4. Measure 115: quarter rest, eighth notes G4, A4, B4. Measure 116: quarter rest, eighth notes G4, A4, B4. Markings: **I** in a box above measure 109, '7' above measure 110.

117

mp *mf* *mp* *mf*

Staff 117-123: Treble clef, 12/8 time signature. Measures 117-123. Measure 117: quarter rest, eighth notes G4, A4, B4. Measure 118: quarter rest, eighth notes G4, A4, B4. Measure 119: quarter rest, eighth notes G4, A4, B4. Measure 120: quarter rest, eighth notes G4, A4, B4. Measure 121: quarter rest, eighth notes G4, A4, B4. Measure 122: quarter rest, eighth notes G4, A4, B4. Measure 123: quarter rest, eighth notes G4, A4, B4. Dynamics: *mp* at measure 117, *mf* at measure 119, *mp* at measure 121, *mf* at measure 123. Markings: 'V' above measure 117.

124

J 7

f *mp* *mp* *mf* *mp* *mf*

Staff 124-137: Treble clef, 12/8 time signature. Measures 124-137. Measure 124: quarter rest, eighth notes G4, A4, B4. Measure 125: quarter rest, eighth notes G4, A4, B4. Measure 126: quarter rest, eighth notes G4, A4, B4. Measure 127: quarter rest, eighth notes G4, A4, B4. Measure 128: quarter rest, eighth notes G4, A4, B4. Measure 129: quarter rest, eighth notes G4, A4, B4. Measure 130: quarter rest, eighth notes G4, A4, B4. Measure 131: quarter rest, eighth notes G4, A4, B4. Measure 132: quarter rest, eighth notes G4, A4, B4. Measure 133: quarter rest, eighth notes G4, A4, B4. Measure 134: quarter rest, eighth notes G4, A4, B4. Measure 135: quarter rest, eighth notes G4, A4, B4. Measure 136: quarter rest, eighth notes G4, A4, B4. Measure 137: quarter rest, eighth notes G4, A4, B4. Dynamics: *f* at measure 124, *mp* at measure 126, *mp* at measure 128, *mf* at measure 130, *mp* at measure 132, *mf* at measure 134. Markings: **J** in a box above measure 125, '7' above measure 126, 'V' above measure 128.

138

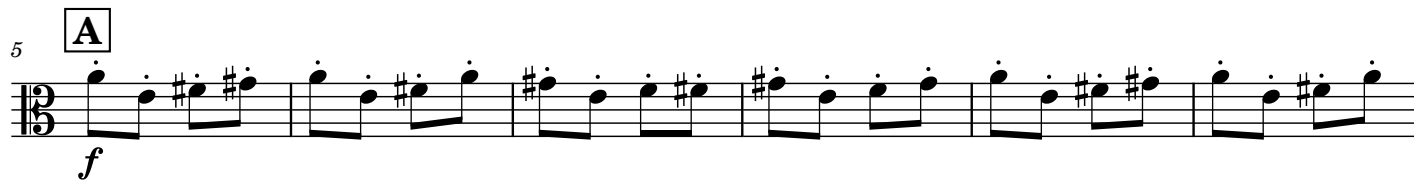
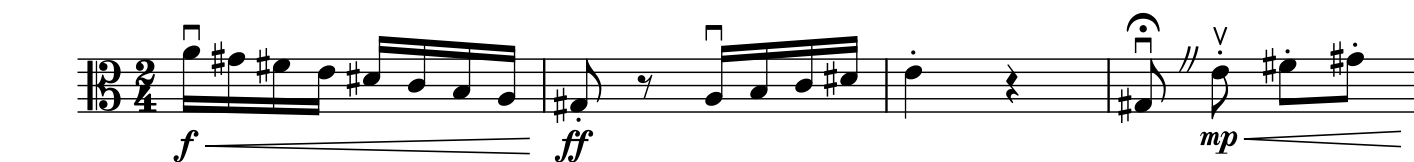
f *mf* *ff*

Staff 138-141: Treble clef, 12/8 time signature. Measures 138-141. Measure 138: quarter rest, eighth notes G4, A4, B4. Measure 139: quarter rest, eighth notes G4, A4, B4. Measure 140: quarter rest, eighth notes G4, A4, B4. Measure 141: quarter rest, eighth notes G4, A4, B4. Dynamics: *f* at measure 138, *mf* at measure 140, *ff* at measure 141.

Viola 2

Milonga de Chimacum

Bree Dwyer

 $\text{♩} = 114$ 

41

41

arco

f

47

[illegible]

53

53 E pizz. *mf*

59

[illegible]

65

65 F arco *f*

71

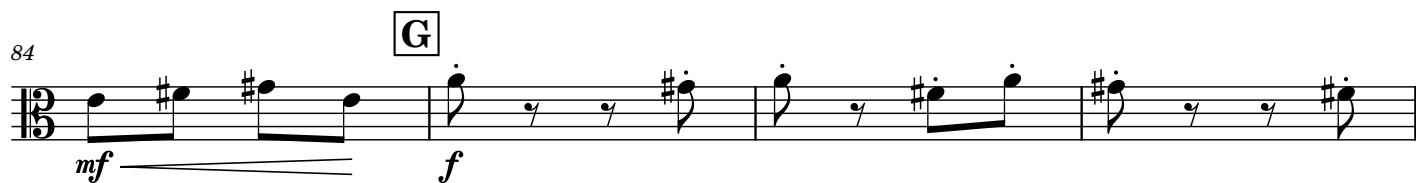
75

Example 1 shows a musical score in 3/8 time. The notation includes a treble clef, a key signature of one sharp (F#), and a 3/8 time signature. The melody consists of eighth and sixteenth notes. Dynamic markings include *f* (forte) and *ff* (fortissimo).

79



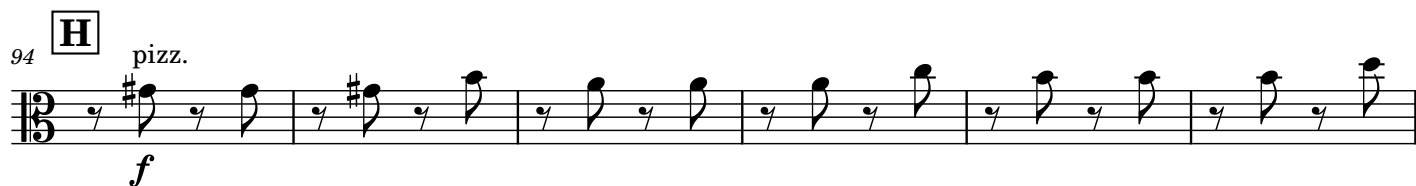
84



88



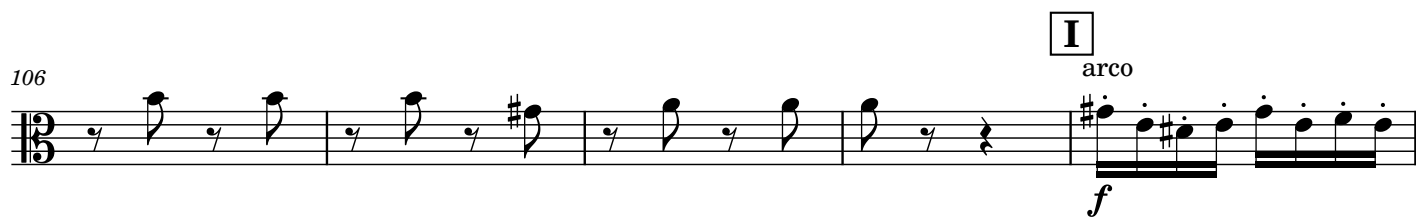
94



100



106



111



115



119



123



127



132



135



140



Viola 3

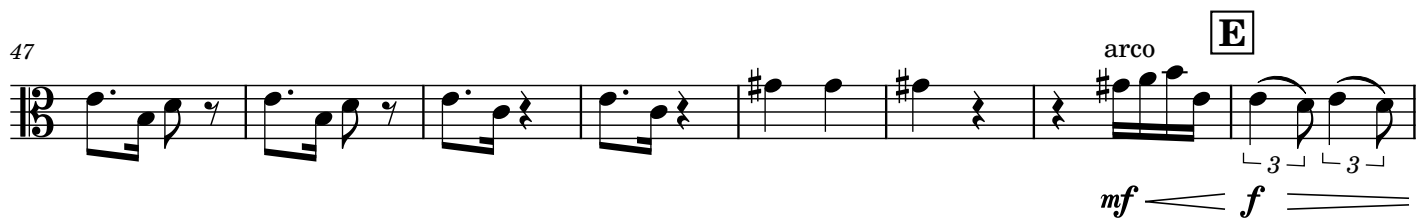
Milonga de Chimacum

Bree Dwyer

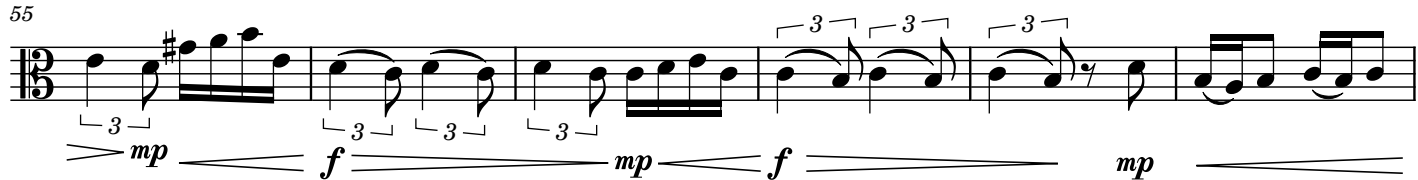
♩ = 114



47



55



61



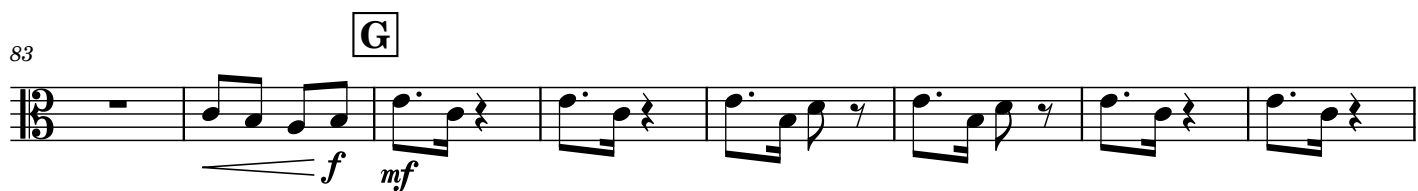
67



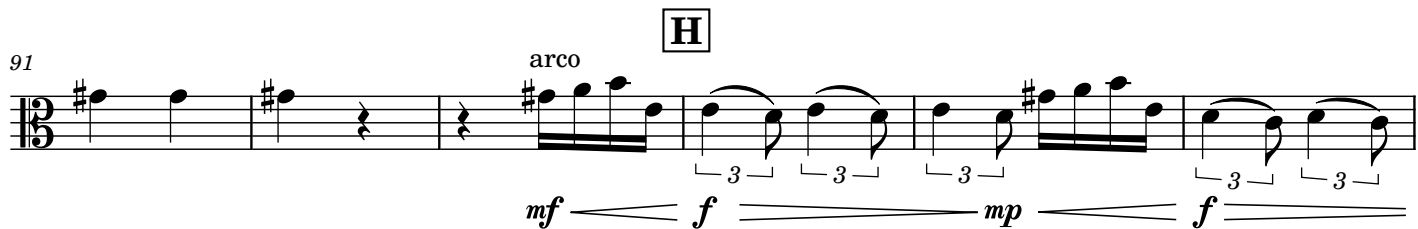
75



83



91



97



103



108



114



121



128



134



140



Viola 4A

Milonga de Chimacum

Bree Dwyer

$\text{♩} = 114$
pizz.

arco

A
pizz.

f — *ff* *f*

7

B

13

19

C

25

31

37

D

43

49

E

55



61



67

F

73



79



85

G

91

H

97



103



109

I

115



121

J

127



133



139

arco



Viola 4B

Milonga de Chimacum

Bree Dwyer

♩ = 114
pizz.

f *ff* *f*

arco

A

7

B

15

22

29 **C**

37

45 **D**

54 **E**

2

62

F



71



79

G



89

H

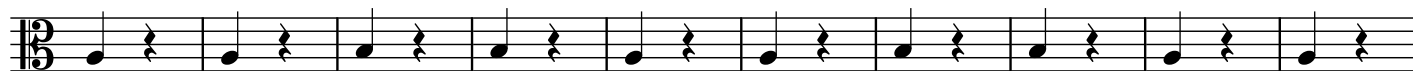


98



108

I

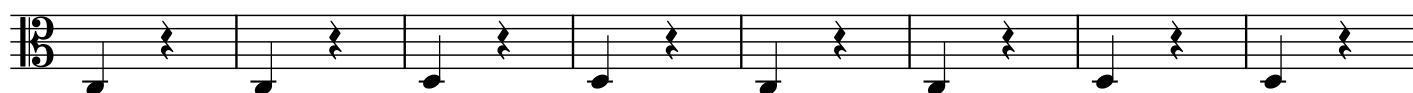


118

J

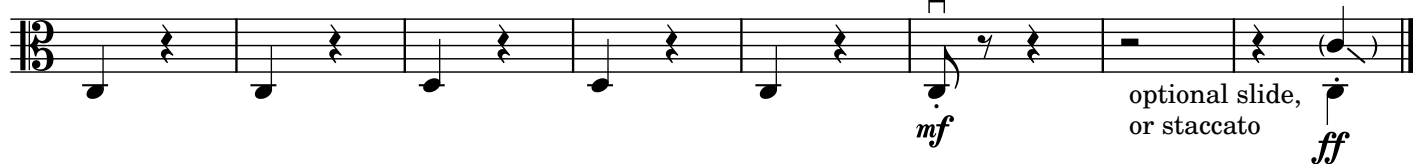


128



136

arco



Milonga de Chimacum

Bree Dwyer

♩ = 114

Violino 1

Violino 2

Violino 3

Violino 4A

Violino 4B

f *ff* *mp* *arco* *arco*

pizz.

f *ff*

5 **A** *pizz.*

Vla. 1

Vla. 2

Vla. 3

Vla. 4A

Vla. 4B

mf *f* *mf* *f* *f*

pizz. *pizz.* *pizz.* *pizz.*

9

Vla. 1

Vla. 2

Vla. 3

Vla. 4A

Vla. 4B

This system contains measures 9 through 12 of a musical piece. It features five staves: Vla. 1, Vla. 2, Vla. 3, Vla. 4A, and Vla. 4B. The key signature has one sharp (F#) and the time signature is 3/8. Vla. 1 plays a rhythmic pattern of eighth notes and rests. Vla. 2 plays a sequence of eighth notes, some with accents. Vla. 3 has a more sparse pattern with some notes marked with an accent. Vla. 4A plays a melodic line with eighth and sixteenth notes. Vla. 4B provides a bass line with eighth notes and rests.

13

B

Vla. 1

Vla. 2

Vla. 3

Vla. 4A

Vla. 4B

arco

pizz.

mf

f

mp

f

This system contains measures 13 through 16, marked with a box 'B'. It features the same five staves as the previous system. Vla. 1 continues with its rhythmic pattern. Vla. 2 has a 'pizz.' (pizzicato) instruction and a dynamic change to *f* in measure 14. Vla. 3 has an 'arco' (arco) instruction in measure 13 and features triplets in measures 14 and 16, with dynamics *mf*, *f*, *mp*, and *f* indicated. Vla. 4A and Vla. 4B continue their melodic and bass lines respectively.

17

Vla. 1

Vla. 2

Vla. 3

Vla. 4A

Vla. 4B

This musical score block contains measures 17 through 20 of a piece, with a second system starting at measure 21. The score is for five parts: Vla. 1, Vla. 2, Vla. 3, Vla. 4A, and Vla. 4B. The key signature has one flat (B-flat) and the time signature is 3/8. Vla. 1 and Vla. 2 play a simple melody of eighth notes. Vla. 3 features a more complex line with triplets and dynamic markings: *mp* (mezzo-piano) at measure 17, *f* (forte) at measure 18, and *mp* at measure 19. Vla. 4A and Vla. 4B provide harmonic support with eighth notes and rests.

21

Vla. 1

Vla. 2

Vla. 3

Vla. 4A

Vla. 4B

This musical score block contains measures 21 through 24. The notation continues for the same five parts. Vla. 3 has dynamic markings of *f* at measure 21, *mp* at measure 22, and *f* at measure 23. Vla. 4A includes a sharp sign (F#) in measure 21. Vla. 4B remains mostly silent with rests.

25

Vla. 1

Vla. 2

Vla. 3

Vla. 4A

Vla. 4B

This musical score block covers measures 25 through 28 for five violin parts. The key signature has one flat (B-flat), and the time signature is 3/8.
- **Vla. 1:** Measures 25-28 consist of quarter notes: G4, A4, Bb4, and A4.
- **Vla. 2:** Measures 25-28 consist of eighth notes: G4, A4, Bb4, A4, G4, F4, E4, and D4.
- **Vla. 3:** Measures 25-28 feature a triplet of eighth notes (G4, A4, Bb4) in measures 25 and 26, followed by a quarter note (A4) in measure 27, and a quarter note (G4) in measure 28. A *mf* dynamic marking is present in measure 26.
- **Vla. 4A:** Measures 25-28 consist of eighth notes: G4, A4, Bb4, A4, G4, F4, E4, and D4.
- **Vla. 4B:** Measures 25-28 consist of quarter notes: G4, A4, Bb4, and A4.

29

C arco

Vla. 1

Vla. 2

Vla. 3

Vla. 4A

Vla. 4B

This musical score block covers measures 29 through 32 for five violin parts. The key signature has one flat (B-flat), and the time signature is 3/8.
- **Vla. 1:** Measures 29-32 consist of a continuous sixteenth-note pattern: G4, A4, Bb4, A4, G4, F4, E4, D4, G4, A4, Bb4, A4, G4, F4, E4, D4. A *f* dynamic marking is present in measure 29.
- **Vla. 2:** Measures 29-32 consist of quarter notes: G4, A4, Bb4, and A4.
- **Vla. 3:** Measures 29-32 consist of eighth notes: G4, A4, Bb4, A4, G4, F4, E4, and D4. A *pizz.* marking is present in measure 29, and a *mp* dynamic marking is present in measure 30.
- **Vla. 4A:** Measures 29-32 consist of eighth notes: G4, A4, Bb4, A4, G4, F4, E4, and D4.
- **Vla. 4B:** Measures 29-32 consist of quarter notes: G4, A4, Bb4, and A4.

33

Vla. 1

Vla. 2

Vla. 3

Vla. 4A

Vla. 4B

The image shows a musical score for five violin parts (Vla. 1 to Vla. 4B) across four measures (33-36). The key signature is one sharp (F#) and the time signature is 12/8. Vla. 1 plays a continuous eighth-note pattern. Vla. 2 and Vla. 3 have more complex rhythmic patterns with rests. Vla. 4A plays a steady eighth-note pattern. Vla. 4B plays a simple eighth-note pattern with rests.

Violin 1 (Vla. 1) and Violin 2 (Vla. 2) parts are shown in 13/8 time. Violin 1 plays a continuous eighth-note pattern. Violin 2 plays a more complex pattern with rests. Violin 3 (Vla. 3) is marked 'arco' and plays a sustained note with a dynamic marking of *mp* in measure 37, *p* in measure 38, and *mf* in measure 39, with a triplet in measure 40. Violin 4A (Vla. 4A) and Violin 4B (Vla. 4B) parts are also shown, with Violin 4A playing a pattern of eighth and sixteenth notes, and Violin 4B playing a sustained note with a dynamic marking of *p* in measure 37, *p* in measure 38, and *mf* in measure 39, with a triplet in measure 40.

41

Vla. 1

Vla. 2

Vla. 3

Vla. 4A

Vla. 4B

p

45

D

Vla. 1

mf

arco

Vla. 2

f

pizz.

Vla. 3

mf

Vla. 4A

Vla. 4B

49

Vla. 1

Vla. 2

Vla. 3

Vla. 4A

Vla. 4B

53

E

Vla. 1

Vla. 2

Vla. 3

Vla. 4A

Vla. 4B

arco

pizz.

mf

f

mp

f

57

Vla. 1

Vla. 2

Vla. 3

Vla. 4A

Vla. 4B

Measures 57-60. The score is for five violin parts. Measure 57: Vla. 1 has a whole rest. Vla. 2 has eighth notes G4, A4, B4, C5. Vla. 3 has a triplet of eighth notes G4, A4, B4, followed by a quarter note C5. Vla. 4A has a quarter note G4, followed by a half note A4. Vla. 4B has a quarter note G4, followed by a half rest. Measure 58: Vla. 1 has a whole rest. Vla. 2 has eighth notes G4, A4, B4, C5. Vla. 3 has a triplet of eighth notes G4, A4, B4, followed by a quarter note C5. Vla. 4A has a quarter note G4, followed by a half note A4. Vla. 4B has a quarter note G4, followed by a half rest. Measure 59: Vla. 1 has a whole rest. Vla. 2 has eighth notes G4, A4, B4, C5. Vla. 3 has a triplet of eighth notes G4, A4, B4, followed by a quarter note C5. Vla. 4A has a quarter note G4, followed by a half note A4. Vla. 4B has a quarter note G4, followed by a half rest. Measure 60: Vla. 1 has a whole rest. Vla. 2 has eighth notes G4, A4, B4, C5. Vla. 3 has a triplet of eighth notes G4, A4, B4, followed by a quarter note C5. Vla. 4A has a quarter note G4, followed by a half note A4. Vla. 4B has a quarter note G4, followed by a half rest. Dynamics: Vla. 3 starts at *mp*, increases to *f* at measure 58, and returns to *mp* at measure 60. Vla. 4A has a crescendo line from measure 57 to 60.

61

Vla. 1

Vla. 2

Vla. 3

Vla. 4A

Vla. 4B

Measures 61-64. The score is for five violin parts. Measure 61: Vla. 1 has a whole rest. Vla. 2 has eighth notes G4, A4, B4, C5. Vla. 3 has a quarter note G4, followed by a half note A4. Vla. 4A has a quarter note G4, followed by a half note A4. Vla. 4B has a quarter note G4, followed by a half rest. Measure 62: Vla. 1 has a half note G4, followed by a quarter note A4. Vla. 2 has eighth notes G4, A4, B4, C5. Vla. 3 has a triplet of eighth notes G4, A4, B4, followed by a quarter note C5. Vla. 4A has a quarter note G4, followed by a half note A4. Vla. 4B has a quarter note G4, followed by a half rest. Measure 63: Vla. 1 has a half note G4, followed by a quarter note A4. Vla. 2 has eighth notes G4, A4, B4, C5. Vla. 3 has a triplet of eighth notes G4, A4, B4, followed by a quarter note C5. Vla. 4A has a quarter note G4, followed by a half note A4. Vla. 4B has a quarter note G4, followed by a half rest. Measure 64: Vla. 1 has a half note G4, followed by a quarter note A4. Vla. 2 has eighth notes G4, A4, B4, C5. Vla. 3 has a triplet of eighth notes G4, A4, B4, followed by a quarter note C5. Vla. 4A has a quarter note G4, followed by a half note A4. Vla. 4B has a quarter note G4, followed by a half rest. Dynamics: Vla. 1 starts at *mf* at measure 62 and increases to *f* at measure 64. Vla. 3 starts at *f* at measure 62, decreases to *mp* at measure 63, and returns to *f* at measure 64. Vla. 4A has a crescendo line from measure 61 to 64.

65

Vla. 1

Vla. 2

Vla. 3

Vla. 4A

Vla. 4B

f

mf

f

3

3

3

69

F

Vla. 1

Vla. 2

Vla. 3

Vla. 4A

Vla. 4B

mp

f

mf

mf

arco

pizz.

73

Vla. 1

mp

Vla. 2

Vla. 3

f

Vla. 4A

Vla. 4B

73 74 75 76

77

Vla. 1

mf *mp* *f*

Vla. 2

f

Vla. 3

mf

Vla. 4A

Vla. 4B

77 78 79 80

81

Vla. 1

mp

Vla. 2

Vla. 3

Vla. 4A

Vla. 4B

84

G pizz.

Vla. 1

mf

Vla. 2

mf *f*

Vla. 3

f *mf*

Vla. 4A

Vla. 4B

88

Vla. 1

Vla. 2

Vla. 3

Vla. 4A

Vla. 4B

92

Vla. 1

Vla. 2

Vla. 3

Vla. 4A

Vla. 4B

H arco

f

mf

pizz.

f

arco

mf

f

mp

96

Vla. 1

Vla. 2

Vla. 3

Vla. 4A

Vla. 4B

f *mp* *f* *mp*

3 3 3

100

Vla. 1

Vla. 2

Vla. 3

Vla. 4A

Vla. 4B

f *mf* *f* *mp*

3 3 3

104

Vla. 1

Vla. 2

Vla. 3

Vla. 4A

Vla. 4B

f

mf

I

108

Vla. 1

Vla. 2

Vla. 3

Vla. 4A

Vla. 4B

arco

f

pizz.

f

112

Vla. 1

Vla. 2

Vla. 3

Vla. 4A

Vla. 4B

Measure 112: Vla. 2 starts with a quarter rest, then eighth notes. Vla. 3 has a quarter rest, then eighth notes. Vla. 4A and 4B have quarter notes and eighth notes.

Measure 113: Vla. 2 continues the eighth-note pattern. Vla. 3 continues with eighth notes and rests. Vla. 4A and 4B continue with eighth notes and rests.

Measure 114: Vla. 2 continues the eighth-note pattern. Vla. 3 continues with eighth notes and rests. Vla. 4A and 4B continue with eighth notes and rests.

Measure 115: Vla. 2 continues the eighth-note pattern. Vla. 3 continues with eighth notes and rests. Vla. 4A and 4B continue with eighth notes and rests.

116

Vla. 1

Vla. 2

Vla. 3

Vla. 4A

Vla. 4B

Measure 116: Vla. 1 has a dynamic marking of *mp*. Vla. 2 has a dynamic marking of *ff*. Vla. 3 has a dynamic marking of *mf*. Vla. 4A and 4B continue with eighth notes and rests.

Measure 117: Vla. 1 has a dynamic marking of *mf*. Vla. 2 continues with eighth notes and rests. Vla. 3 continues with eighth notes and rests. Vla. 4A and 4B continue with eighth notes and rests.

Measure 118: Vla. 1 has a dynamic marking of *mp*. Vla. 2 continues with eighth notes and rests. Vla. 3 continues with eighth notes and rests. Vla. 4A and 4B continue with eighth notes and rests.

Measure 119: Vla. 1 has a dynamic marking of *mp*. Vla. 2 continues with eighth notes and rests. Vla. 3 continues with eighth notes and rests. Vla. 4A and 4B continue with eighth notes and rests.

120

Vla. 1

Vla. 2

Vla. 3

Vla. 4A

Vla. 4B

mf

Measures 120-123. Vla. 1: Melodic line with a slur and a crescendo hairpin. Vla. 2: Rhythmic pattern of eighth notes. Vla. 3: Sparse melodic line. Vla. 4A and 4B: Steady eighth-note accompaniment. Dynamics: *mf*.

124

Vla. 1

Vla. 2

Vla. 3

Vla. 4A

Vla. 4B

f *mp* *mf* *f*

J

Measures 124-127. Vla. 1: Melodic line with a slur and a crescendo hairpin. Vla. 2: Rhythmic pattern of eighth notes. Vla. 3: Sparse melodic line. Vla. 4A and 4B: Steady eighth-note accompaniment. Dynamics: *f*, *mp*, *mf*, *f*. Section marker **J** above measure 125.

128

Vla. 1

Vla. 2

Vla. 3

Vla. 4A

Vla. 4B

128 129 130 131

132

Vla. 1

Vla. 2

Vla. 3

Vla. 4A

Vla. 4B

132 133 134 135

mp *mf* *mp*

136

Vla. 1

Vla. 2

Vla. 3

Vla. 4A

Vla. 4B

mf

f

140

Vla. 1

Vla. 2

Vla. 3

Vla. 4A

Vla. 4B

mf

ff

mf
arco

ff

mf
arco

ff

mf
arco

ff

mf

optional slide,
or staccato

ff